

# Institute of Management

## Slovak University of Technology in Bratislava



- **STU** - founded in 1937,  
10 678 students (6,9% foreigners),  
177 study programmes  
the oldest and largest Slovak University  
of Technology,  
7 faculties
- **STU Institute of Management** - founded in 2008  
301 students (thereof 147 foreigners),  
6 study programmes at 3 levels of university education  
+ 1 supplementary study programme  
29 full-time teachers and researchers
- **Profile:**  
Scientific research and pedagogical activities in the area of management and planning in cooperation with the other faculties and workplaces of the Slovak University of Technology, domestic as well as foreign universities and other scientific, research and academic institutions;

# **STU Institute of Management**

## **Scientific and educational profile of the Institute of Management**

- To guarantee the study programmes as interdisciplinary study programmes with the character of cross-university study programmes;
- To guarantee specific educational objectives and modules in operational area of the Institute, integrated into the education in the framework of study programmes guaranteed;
- To open the opportunities for broader student and academic staff mobility aimed at the problem areas of management and planning;
- To integrate the capacities of Slovak University of Technology in the areas of management and planning and guarantee the knowledge development in the mentioned areas at the Slovak University of Technology.

# STU Institute of Management

## Accredited study programmes

Bachelor (Bc.) and Master (Ing. = MSc.)  
study programmes – 276 students

- **Spatial Planning**  
**Investment Planning in Industrial**  
**Enterprise**
- PhD study (PhD.) - 25 students  
**Branch Economies and Management**  
**Spatial Planning**
- **Supplementary pedagogical study** – 21 students



# **STU Institute of Management**

Organisation structure:

- **Department of Construction and Real Estate Management**  
*Head: Daniela Špírková, Assoc. Prof., PhD.*
- **Department of Spatial Planning and Management**  
*Head Ľubomír Jamečný, PhD.*
- **Department of Management of Chemical and Foodstuff Technologies**  
*Head: Monika Zatrochová, Assoc. Prof., PhD.*
- **Department of Economics and Management of Entrepreneurship**  
*Head: Marián Zajko, Assoc. Prof., PhD., M.B.A.*
- **Study Department**
- **Office of Director:**  
*Director: Marián Zajko, Assoc. Prof., PhD., M.B.A.*

# Study programme Spatial planning

**Dept. of Spatial Planning** - Member of the Association of European Schools of Planning - AESOP,

**Study focus** - developing abilities of graduates

- to analyze state of the art, characteristics and values of spatial systems as for their nature and socio-economic structures, culture, economics, ecology, economic and social dimensions, and landscape aesthetics;
- to analyze forms of utilizing landscape and settlement;
- to use the knowledge and experience gained in own creative planning work by facilitating the processes of social participation, steering the mediation of conflicts in planning process and coordinating complex spatial and landscape management.

## **Three pillars of the study programme**

- **MANAGEMENT**

Economics, project management, management of spatial development

- **HUMANITIES, NATURAL and TECHNICAL SCIENCES**

Ecology, sociology, law, transportation and technical infrastructure

- **CREATIVE ABILITIES**

Urbanism and urban planning, landscape planning, strategic planning

# **Study programme Investment Planning in Industrial Enterprise**

## **Dept. of of Construction and Real Estate Management**

Multidisciplinary study programme focusing on the abilities of graduates:

- to develop insight in technology, production and logistics of industrial enterprises in order to be able to analyse risks in investment planning and decision making and real estate management;
- to solve problems of strategy development, financial management, real estate management, manufacturing and innovation development of enterprises, prepare project budgets and manage their financing from private and public resources,
- to prepare and implement company business plans and innovation projects;
- to be able to work efficiently as an individual, team member or team manager of an extensive project.

# STU Institute of Management

## Job positions for graduates

**Investment manager** in enterprises of construction, automotive, machine engineering and energy industry;

**Expert in planning and management of finance or of investment project portfolio,**

**Financial manager** - finance management and investment evaluation

**Spatial planner** in public administration (construction offices, city authorities ), but also in private sector, developer companies, bank sector etc.;

**Expert in development of territorial plans, community plans and regional development;**

# STU Institute of Management

## Research centres:

**SPECTRA Centre of Excellence of the EU** – Director: Mr. Maroš Finka, Prof. M. Arch., PhD.  
[www.spectra-perseus.sk](http://www.spectra-perseus.sk)

### **Centre of Excellence for the Settlement Infrastructure Development of the Knowledge-Based Economy**

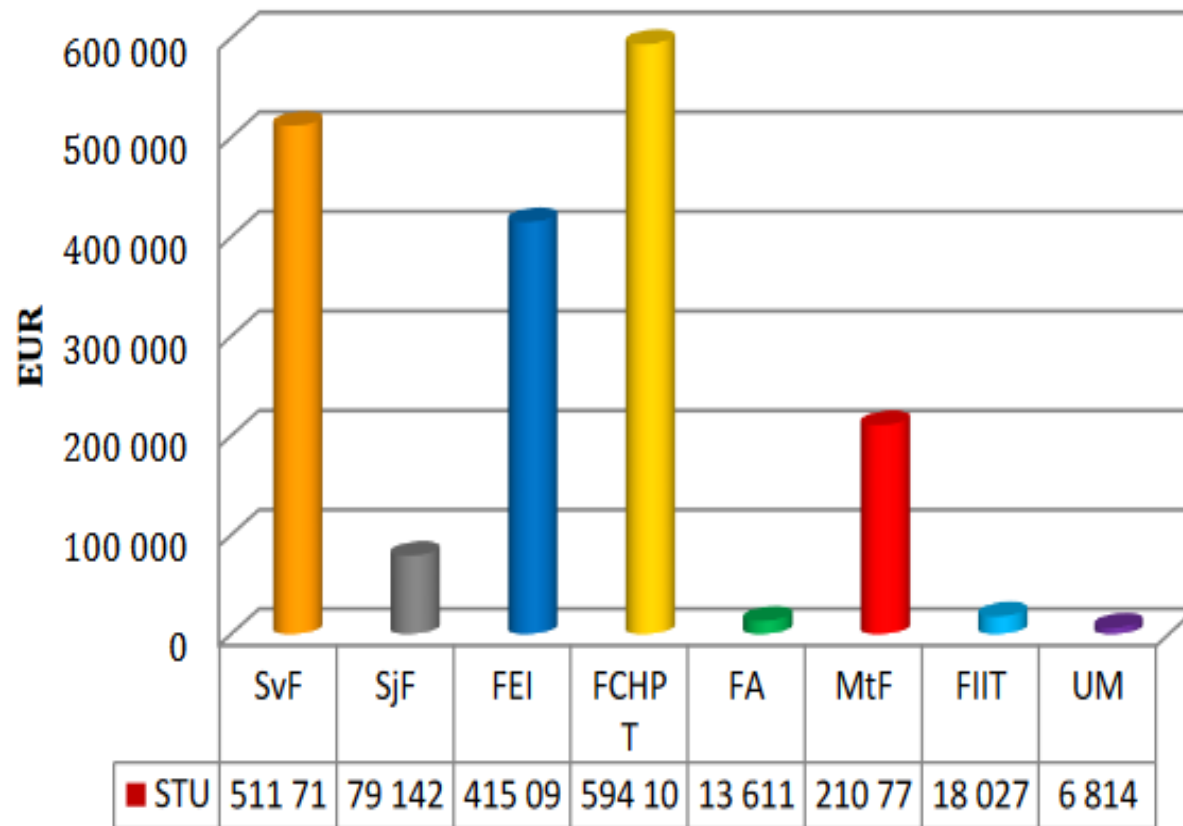
Research activities of this centre offer tools for optimising the infrastructure of settlement and for space optimising economic activities from the point of view of sustainability of land development and of creation of the micro-environment of humans. They are focused on harmonising settlement activities and on sustainable use of natural resources, including land space, due to systems of values, demands and possibilities of the knowledge-based society.

**CESTA** – Centre for Interdisciplinary Research and Society Strategies,

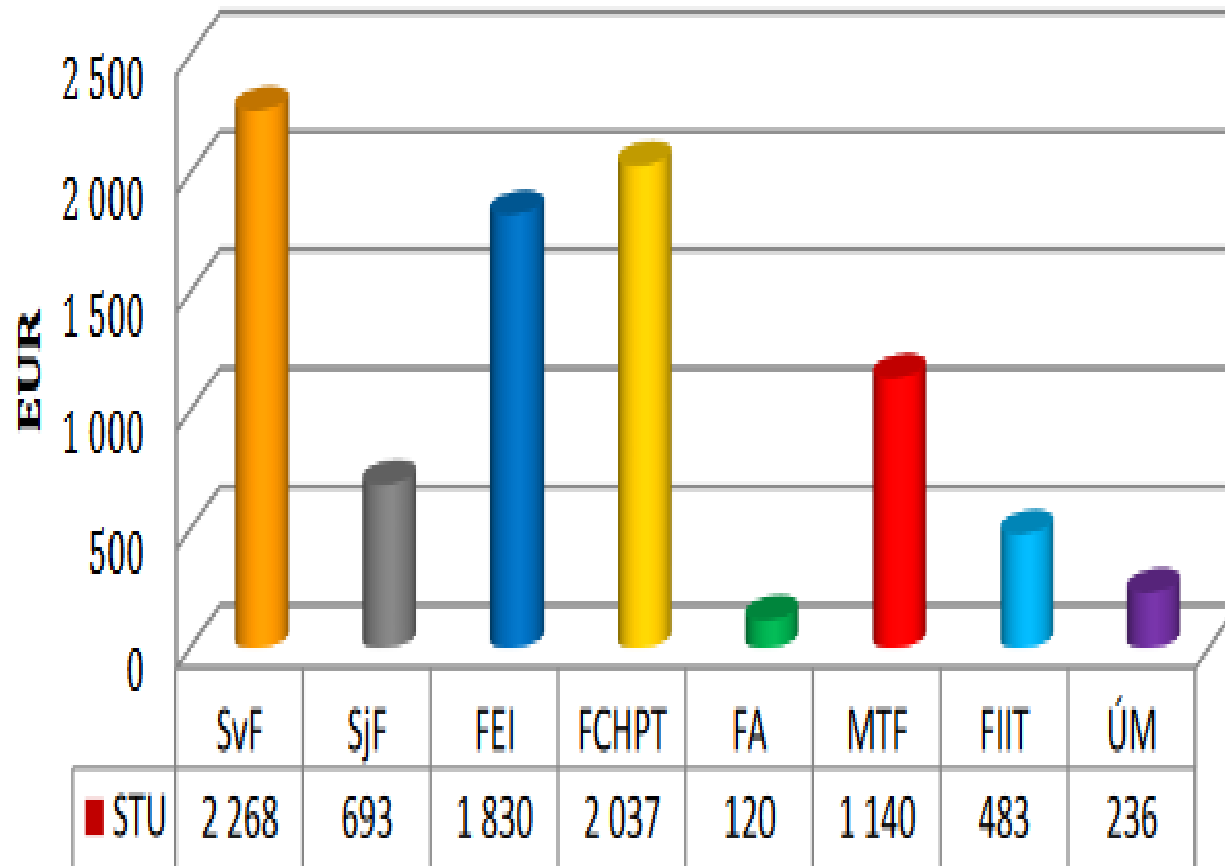
**SLOVAKGLOBE** – joint workplace of Slovak Academy of Sciences and STU for research of social dimension of global change



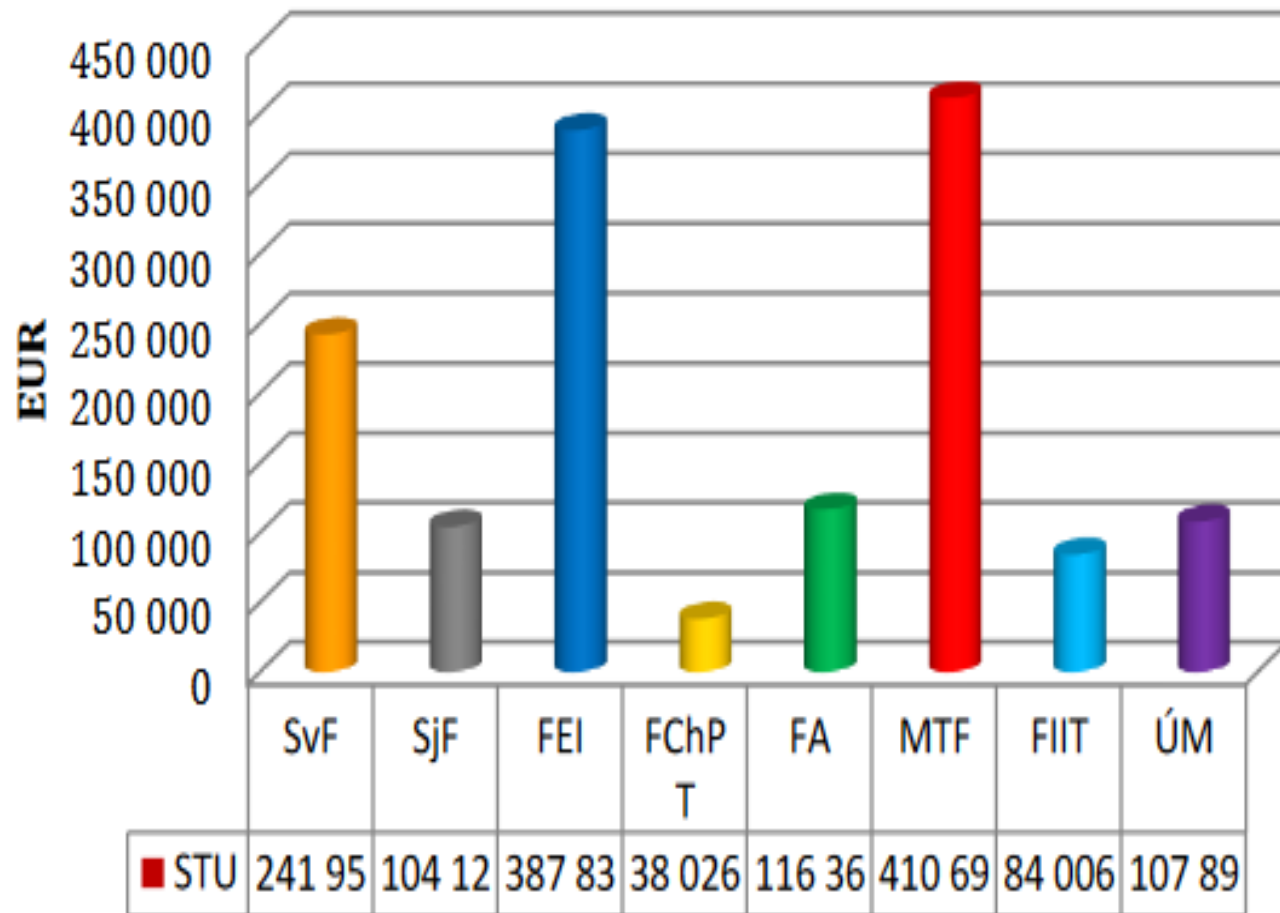
# IM STU - Share in domestic research grants (VEGA) within the STU - year 2021



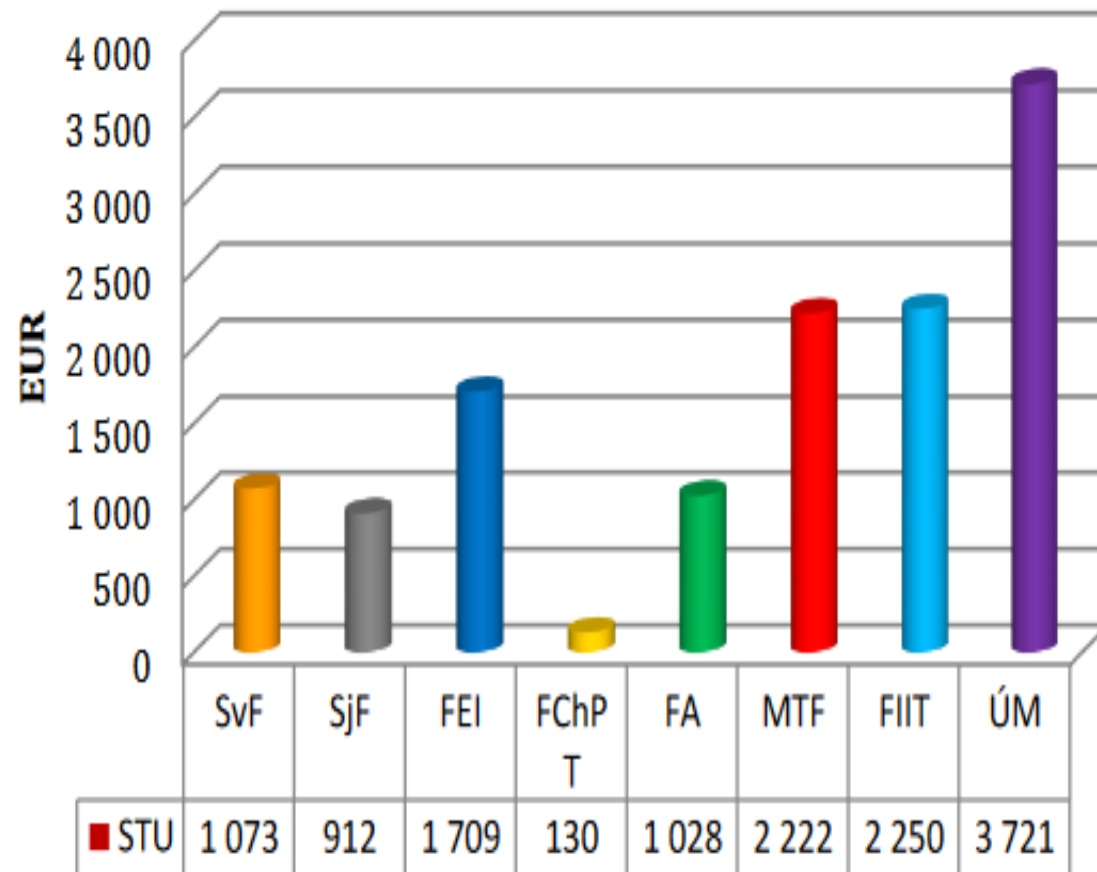
# IM STU - Share in domestic research grants within the STU per 1 creative worker - year 2021



# IM STU - Share in foreign research grants within the STU - year 2021



# IM STU - Share in foreign research grants per 1 creative worker within the STU - year 2021



# **IM STU – Activities in international research networks - year 2021**

- Network of Spatial Research and Planning in Central, Eastern and South Eastern Europe (SPA-CE.NET)



Central European scientific, R&D and educational workplace in the field of spatial planning, strategic socio-economic development planning, urban and regional planning established in the collaboration of outstanding European institutions



## SPECTRA Centre of Excellence

- 5 subcentres representing thematic focus of R&D and education
- award of the status “Centre of Excellence of the EU” in 2002 and 2009
- holder of international awards for excellent projects including the best practice in UNEP UNO report





U R B A N

S A F E T Y

C E N T R E

Urban safety as an environmental quality - addresses not only physical but also psychological importance of safety for humans in the urban environment. Activities of the centre are dealing with the practical implementation of urban safety topic within urban development covering the whole complexity.

Director:

**Dr. Vladimír Ondrejčka**

[vladimir.ondrejcka@stuba.sk](mailto:vladimir.ondrejcka@stuba.sk)

### **Examples of projects and research activities:**

**CONNECTGREEN (EU Interreg Program Central Europe)** - Restoring and managing ecological corridors in mountains as the green infrastructure in the Danube basin

**TRANSGREEN (EU Interreg Program Central Europe)** - Integrated Transport and Green Infrastructure Planning in the Danube-Carpathian Region for the Benefit of People and Nature

**ECOCITY (EU Interreg Program Central Europe)** - Urban Development towards Appropriate Structures for Sustainable Transport developing sustainable ecologically oriented development strategy for urban development with the stress on sustainable transport and infrastructure concepts

# SPECTRA CE - CHINA



SPECTRA CE

C H I N A





S P E C T R A   C E

C H I N A

The SPECTRA Centre of Excellence -China focuses on the advancement of knowledge, capacity building and promotion of sustainable cities in China, framing scientific, technical, financial and institutional collaboration in relevant areas of knowledge and sustainable planning and development management.

director:

**prof. Khalid Z. el Adli**

expresident ISOCARP, Former Governor of Gîza, expert UNO, k.eladli@yahoo.com

executive director:

**prof. Li Xiang, 李总**

genaral secretary JiaCui Environmental Promotion Center, President of the China SUC Institute (Sustainable Urban and Community Development Institute)Beijing, expert UNO, billy168@126.com

## **Related projects and research activities:**

**SSDIA – Smart Sustainable Development and Innovations**



## **SPECTRA CE - Joint working place on smart eco city in Shanghai**

Joint Working Place Shanghai provides the platform for joint research and planning collaboration in the field of sustainable eco and smart urban development. It is created by the members of The Alliance of China- European Universities in the field of Smart Sustainable Development and Innovation as a non-formal alliance allying top science and technology universities of China and Europe on a voluntary basis following the United Nations Organisation (UNO) goals and principles of sustainable development (SDGs) and New Urban Agenda of the UNO.

executive director:

**prof. Junxiang Li**

research director, School of Ecological and Environmental Sciences, East China Normal University

[jxli@des.ecnu.edu.cn](mailto:jxli@des.ecnu.edu.cn)



**SPECTRA**  
Centre of Excellence



CENTRE FOR  
SMART  
STRUCTURAL  
DEVELOPMENT

The Centre concentrates the capacities working on the topic of smart urban development with a special focus on smart land-use and smart structures for urban development.

Director:

**prof. Maros Finka**

Office of the Vice-Prime Minister of the SR, expert, UN Habitat III expert  
[maros.finka@stuba.sk](mailto:maros.finka@stuba.sk)

### **Examples of projects and research activities:**

**Bratislava 2050** - Territorial Development Prognosis,

**BhENEFIT (EU Interreg Program)** - Built Heritage, Energy and Environmental - Friendly Integrated Tools for the sustainable management of Historic Urban Areas,

**BISON (EU Horizon 2020)** - Bridging Structural Biology with Biological Synthesis and Self Assembly to Reveal Key processes in Living Systems,

**INTEL CITY** - Intelligent Cities - addressing the EU policy objectives of the “knowledge society” in the context of city, INTELCITY roadmap, integrated city-wide ICT information system – (6th EU Framework program 2004 - 2008)



**SPECTRA**  
Centre of Excellence



CENTRE FOR  
STRATEGIC  
PLANNING

The main objective is to concentrate on novel approaches to strategic planning in all relevant levels of decision making respecting challenges streaming from the complexity and uncertainty in particular in global environmental changes and urban governance and on trans-disciplinary research in the field of institutional, behavioural and ecological economics.

Director:

**Dr. Lubomir Jamecny**  
Lubomir.jamecny@stuba.sk

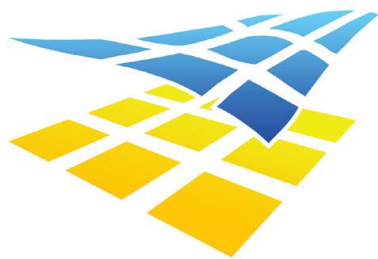
### **Examples of projects and research activities:**

**EU Socrates Erasmus Program** - Methodology for smart integrated territorial strategies of regions and municipalities

**EU Horizon 2020** - Developing and Adapting Professional Programs for Energy,

**Making City** - Efficiency in the Western Balkans Energy efficient pathway for the city transformations: enabling a positive future,

**INSPIRATION (EU Horizon 2020)** - strategic research agenda on soil, land-use and land management in Europe.



S P E C T R A C E

L I V I N G - L A B

The TP LIVING-LAB - CCIBIS Platform is a living laboratory for smart approaches to urban and regional development dealing with a variety of current challenges in the cities and regions. LIVING-LAB is also managing the Carpathian Countries Integrated Biodiversity Information System (CCIBIS) collecting the data from Carpathian countries under the Secretariat of the Carpathian Convention.

Director:

**Dr. Milan Husar**

TP LIVING-LAB – CCIBIS Platform, [milan.husar@stuba.sk](mailto:milan.husar@stuba.sk)

# IM STU - Project activities

Three main levels:

- International scientific research projects
- National scientific research projects
  - Projects for business practice

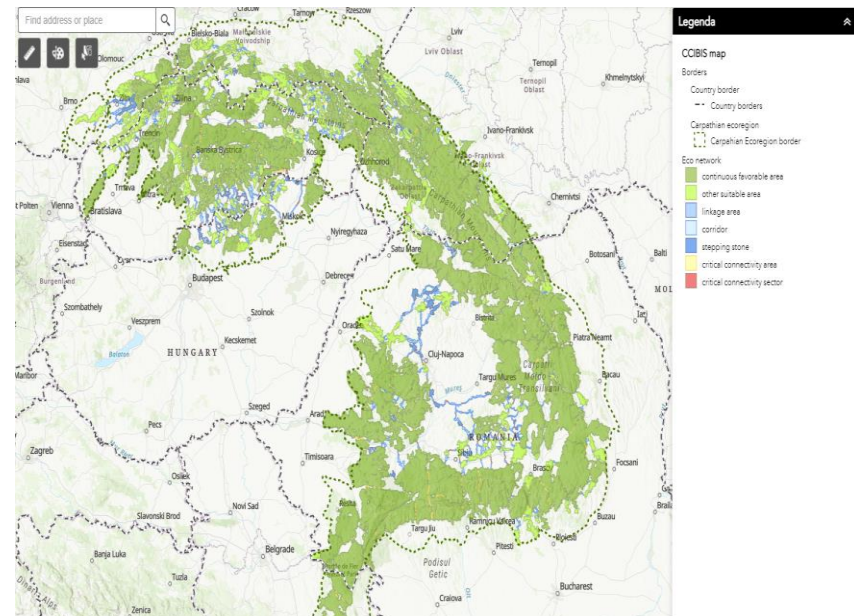
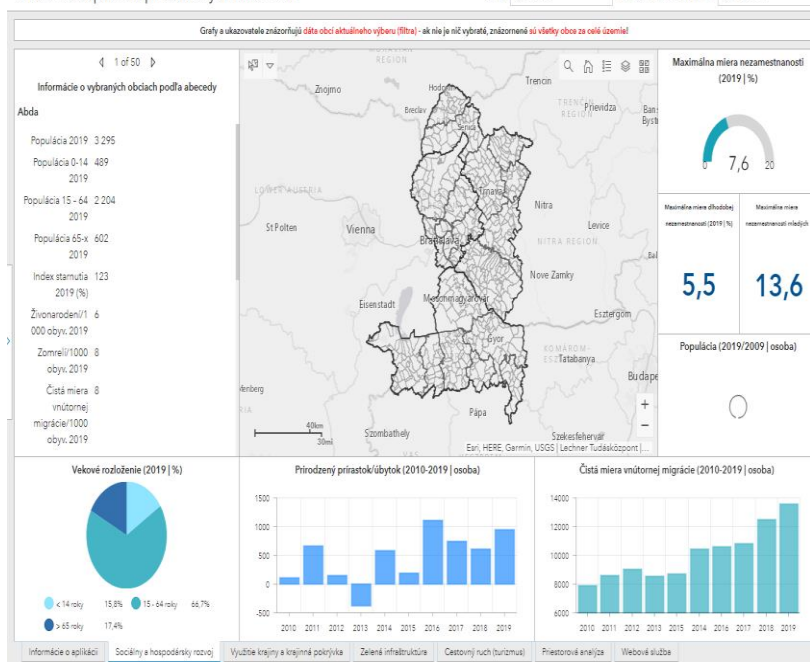


# International scientific research projects

## Focus on the GIS and management of geo-referenced data



TPLab web aplikácia priestorových informácií



# Focus on protection of biodiversity and ecological connectivity of ecosystems



To contribute to safer and environmentally-friendly sustainable urban development in mountainous regions of the Danube Basin with a special focus on the Carpathian Mountains.

How? By improving planning frameworks and developing concrete environmentally-friendly and safe solutions for spatial development taking into account elements of the Green Infrastructure in particular ecological corridors.



# Focus on Development of sustainable Smart cities

## SPECTRA CE – JOINT WORKPLACE for SMART ECO-CITY SHANG HAI

platform for joint research and planning cooperation in v  
sustainable ecological and intelligent city development

executive director:

**prof. Junxiang Li**

research director, School of Ecological and Environmental Sciences, East China Normal University  
jxli@des.ecnu.edu.cn

## MAKING CITY (Horizon 2020)

Covers 34 partners from 9 countries

Goal: solution and demonstration of transformation of city  
power system towards low-carbon cities according to the  
Positive Energy District (PED) concept



# National scientific research projects and projects for business practice

## National level:



## Regional level:



## Local level:



**REGIONAL DEVELOPMENT**

**INNOVATIONS**

**SEA/EIA**

**ADAPTATION TO CLIMATE CHANGE**

**SMART CITY/REGION**

**REAL ESTATE ANALYSES**