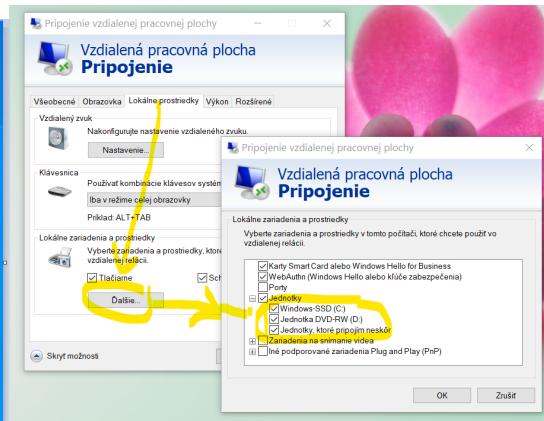
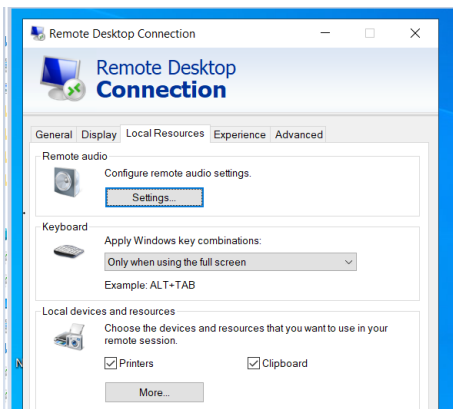
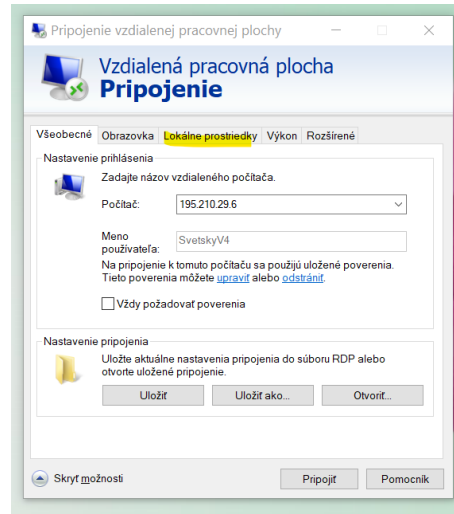
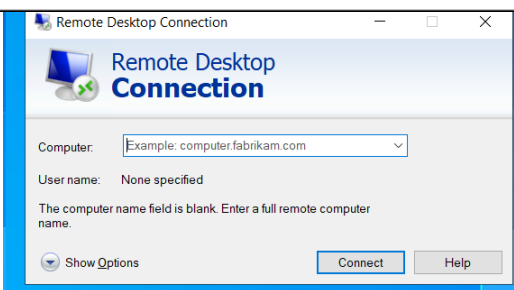
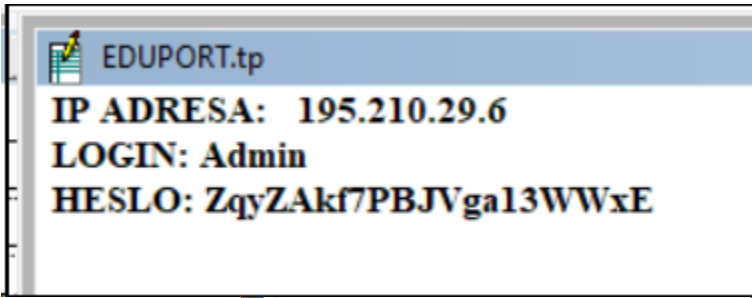
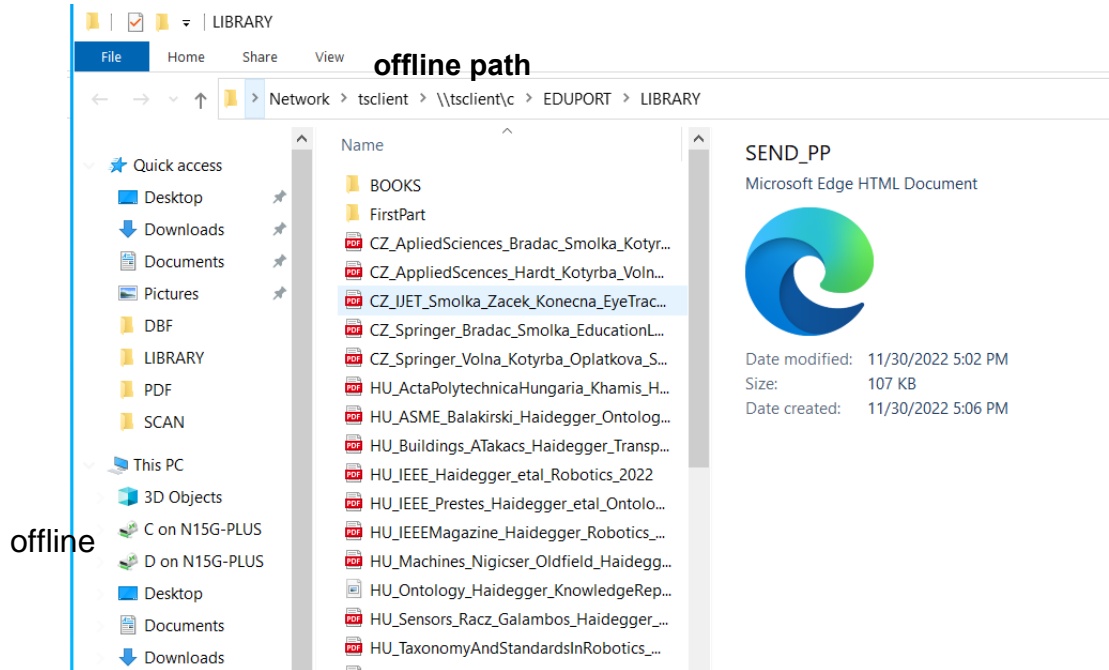


# 1. Setting remote desktop connection

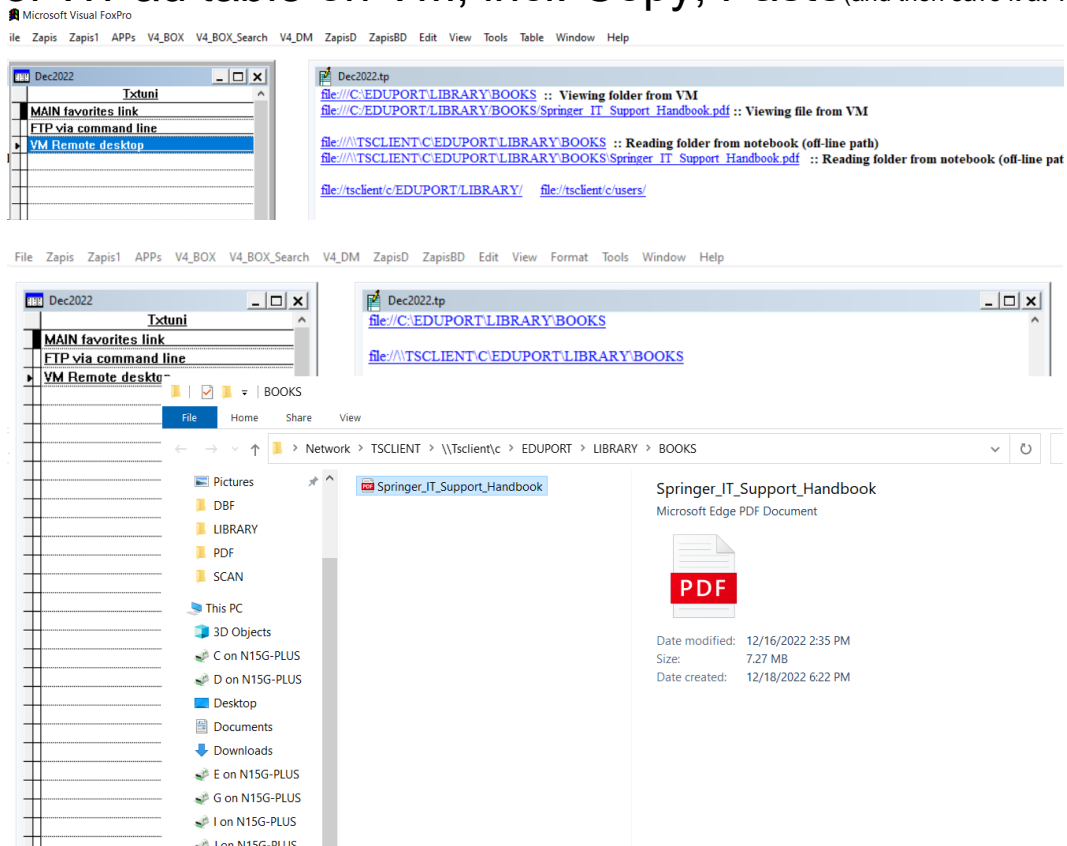


If you want to see offline folders of your notebook, or use printer, sound, clipboard you must permit it clicking on Local resources = Lokálne prostriedky, select option More = Dalsie and permit Jednotky=Disk,USB

## 2. Viewing off-line notebook folders from Virtual Machine using EXPLORER - one can see that I have notebook N15G-PLUS and see C and D disk when using Windows Explorer

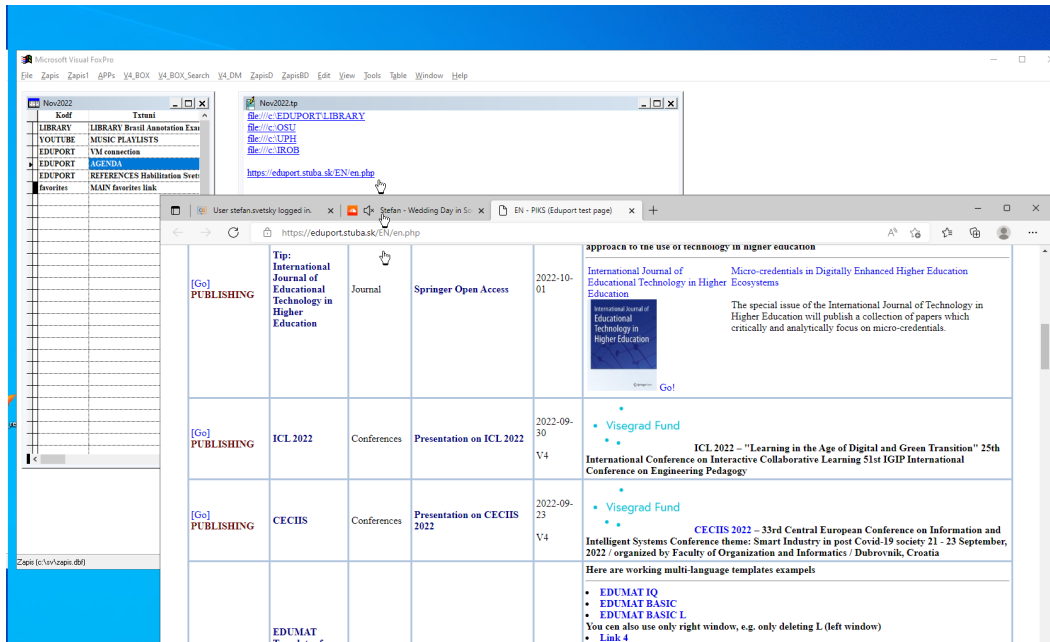


## 3. Viewing and opening off-line folders directly from the text field of WPad table on VM, incl. Copy, Paste (and then save it at VM)



!!! In the text field TP of WPad table you can write

- \* online links: e.g. as is in the next image
- \* offline paths - only you must write file:/// before, e.g. file:///c:\users
- \* WPad is installed on VM but you can download c:\sv folder to your notebook
- \* if you are on VM and wants to browse your notebook you must write \\tslink\ and folder without : - e.g. \\tslink\c\users



In this way you can create your favorites what browsers enable

See such example from my computer:

```

EDUPORT.tp
https://stubask.sharepoint.com/sites/V4 --- https://svti.sk/ --- https://s4s.svti.sk/
https://v4.svti.sk/v4_select.php --- https://svti.sk/OM/om_select.php ---
https://lf.svti.sk/lf_select.php --- https://ecav.svti.sk/ECAVLP.HTM
https://eduport.stuba.sk/EN/en.php

||||||||||||| file:///c:\sv\favorite.txt |||||||||||||||
file:///C:\Users\HP\Box%\20Svnc\WPAD\STU_MTF\VEGA\FM_clanok

: http://translate.google.com/#en/sk/ ; http://translate.google.com/#sk/en/motidba ; http://tts.intranslator.net/a3vj
: https://drive.google.com/ :: https://photos.google.com/ :: http://pubview.stuba.sk/
: file:///C:\Users\hp\ :: file:///C:\Users\HP\downloads

: [[MAILS]]
: https://mail.yahoo.com/d/folders/1
: https://mail.google.com/a/ieee.org
: https://mail.google.com/mail/u/2/#inbox
: https://mail.google.com/mail/u/0/#inbox :: GMAIL
: https://webmail.stuba.sk/ :: WEB-mail STUBA
: https://stesvet@hotmail.com :: Hotmail ---
: https://outlook.live.com/mail/0/inbox
: https://outlook.live.com/mail/0/inbox?np=1&RpsCsrFState=0dfc790a-7064-ff46-2113-ecde140361cf
: https://is.stuba.sk/auth/posta/slozka.pl?lang=sk :: IS STUBA MAIL
: https://is.stuba.sk/auth/?lang=sk :: ACADEMIC INFORMATION SYSTEM AIS
: http://www.mtf.stuba.sk/sk/studentov.html?page_id=287# :: MTF - Students
: http://nosta.websupport.sk

```